

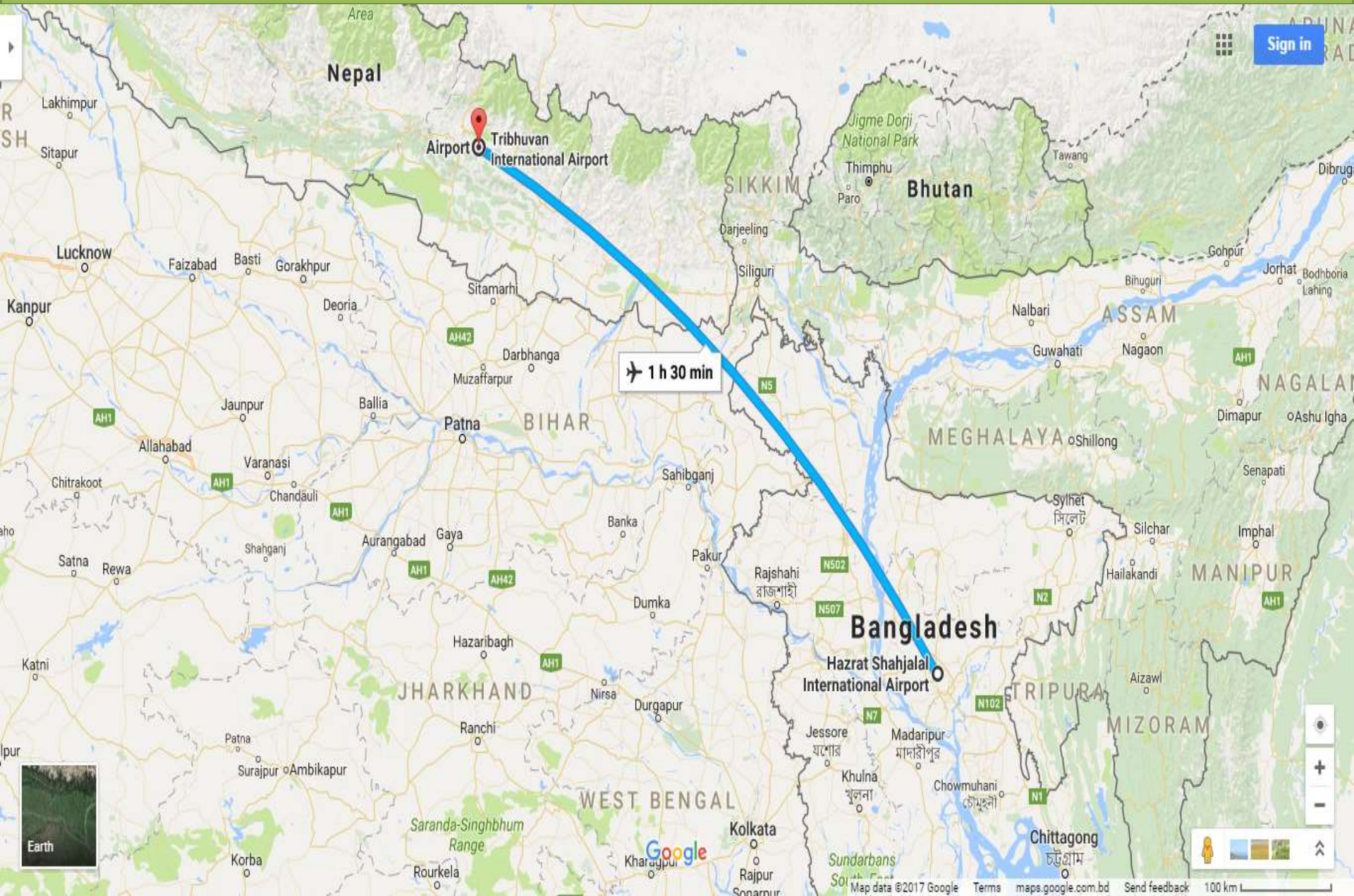


# Presentation on Sylhet City Corporation

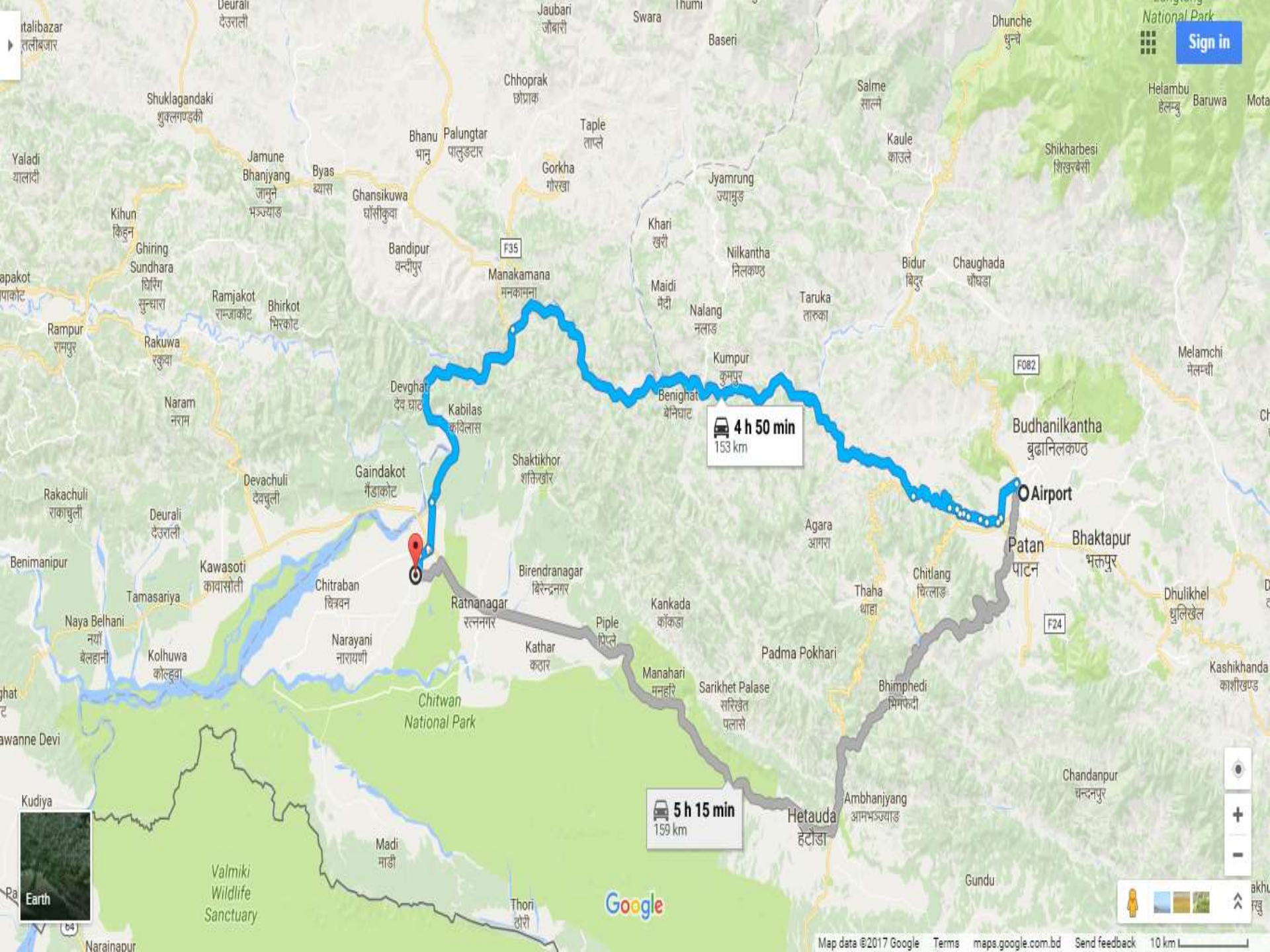
Presented by:

Engr. Mohammad Ali Akbar  
Executive Engineer  
Sylhet City Corporation  
aliakbar86buet@gmail.com

# Location of Nepal & Bangladesh in World Map.







Sign in

4 h 50 min  
153 km

5 h 15 min  
159 km



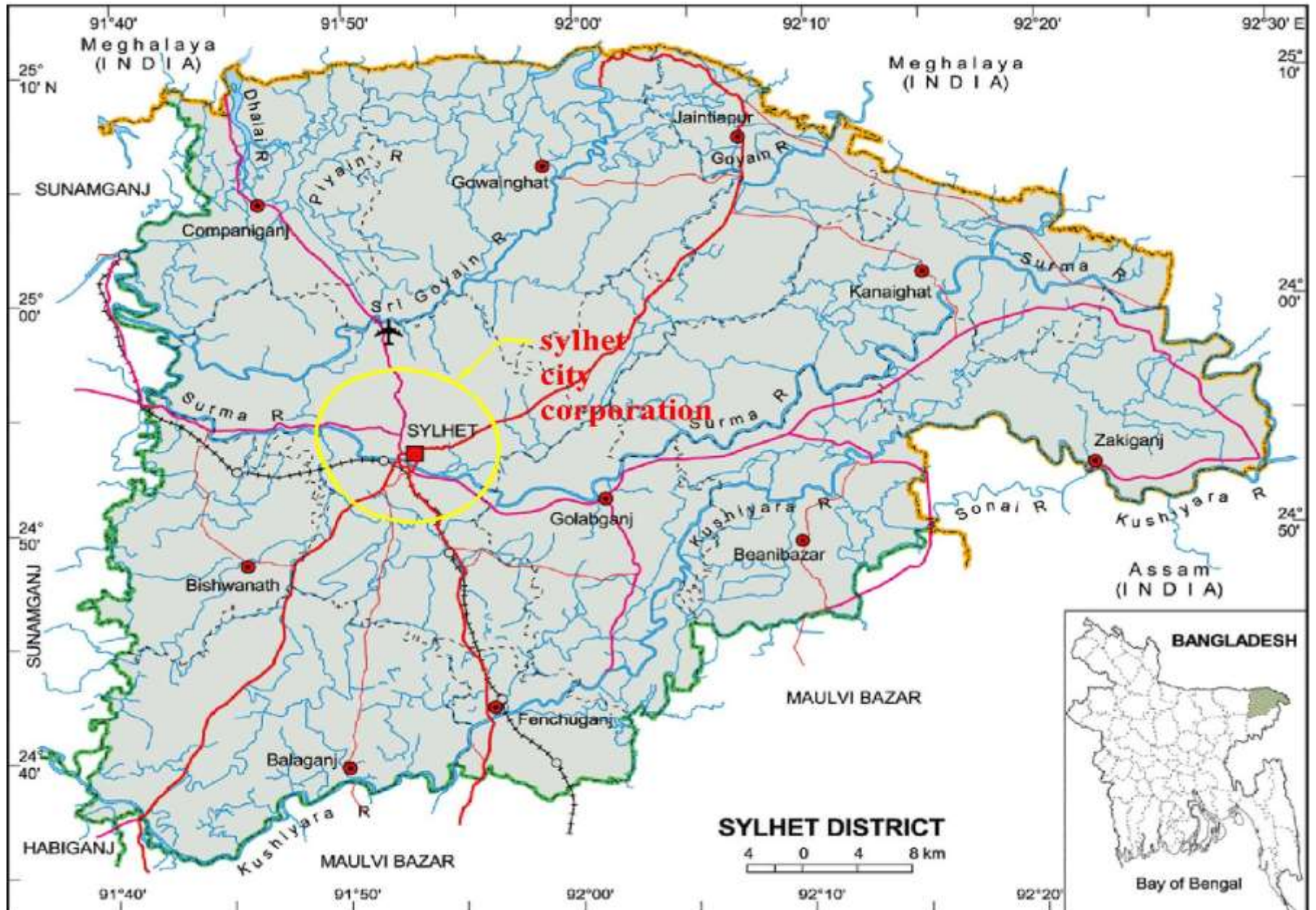
Google



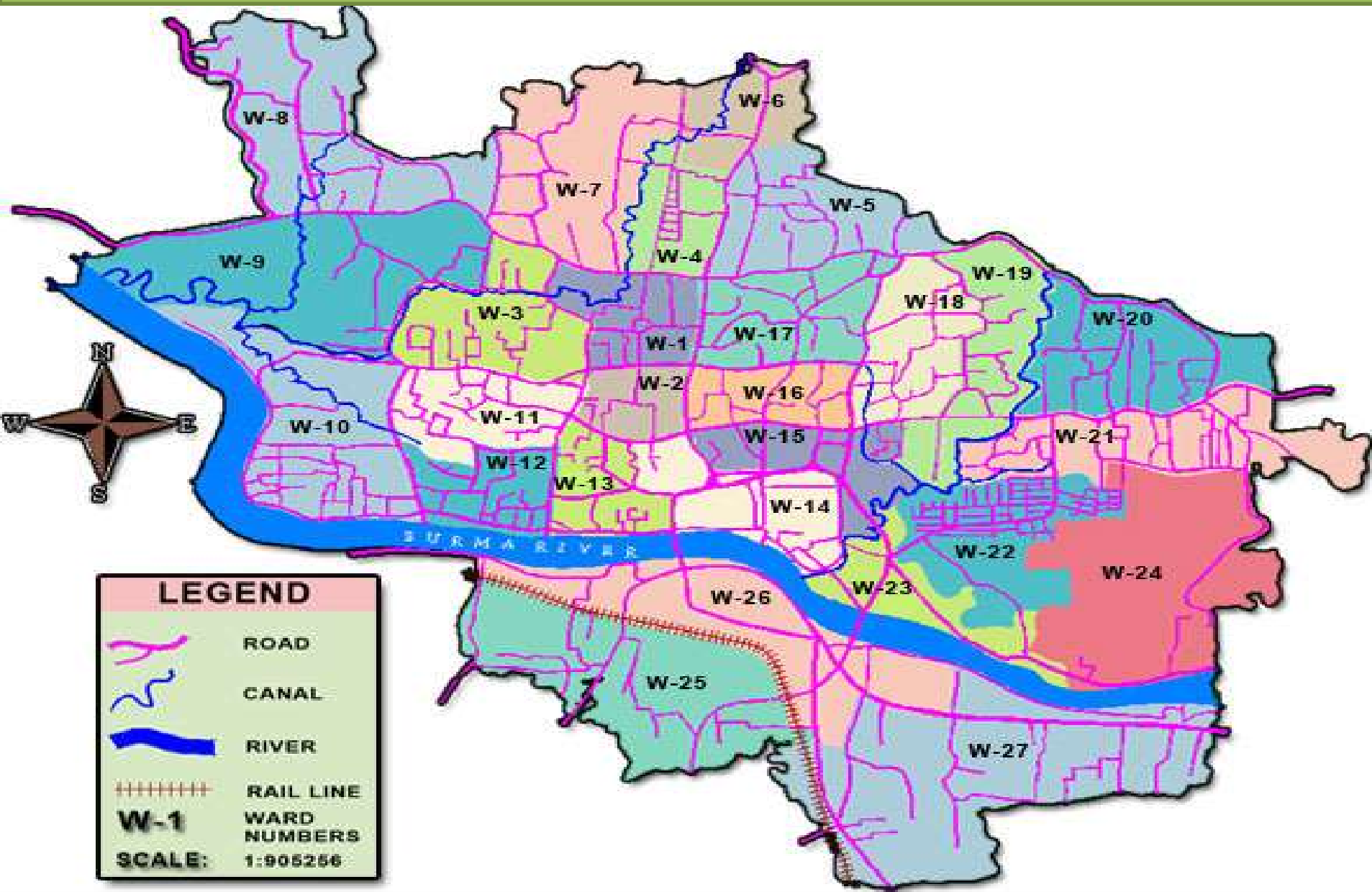
**Map of  
Bangladesh**



# Map of Sylhet Division.



# Map of Sylhet City Corporation Area





Nagar  
Bhaban,  
Sylhet.



*HERITAGE OF*

*SYLHET.*



# Hazrat Shahjalal (R:) Mazar

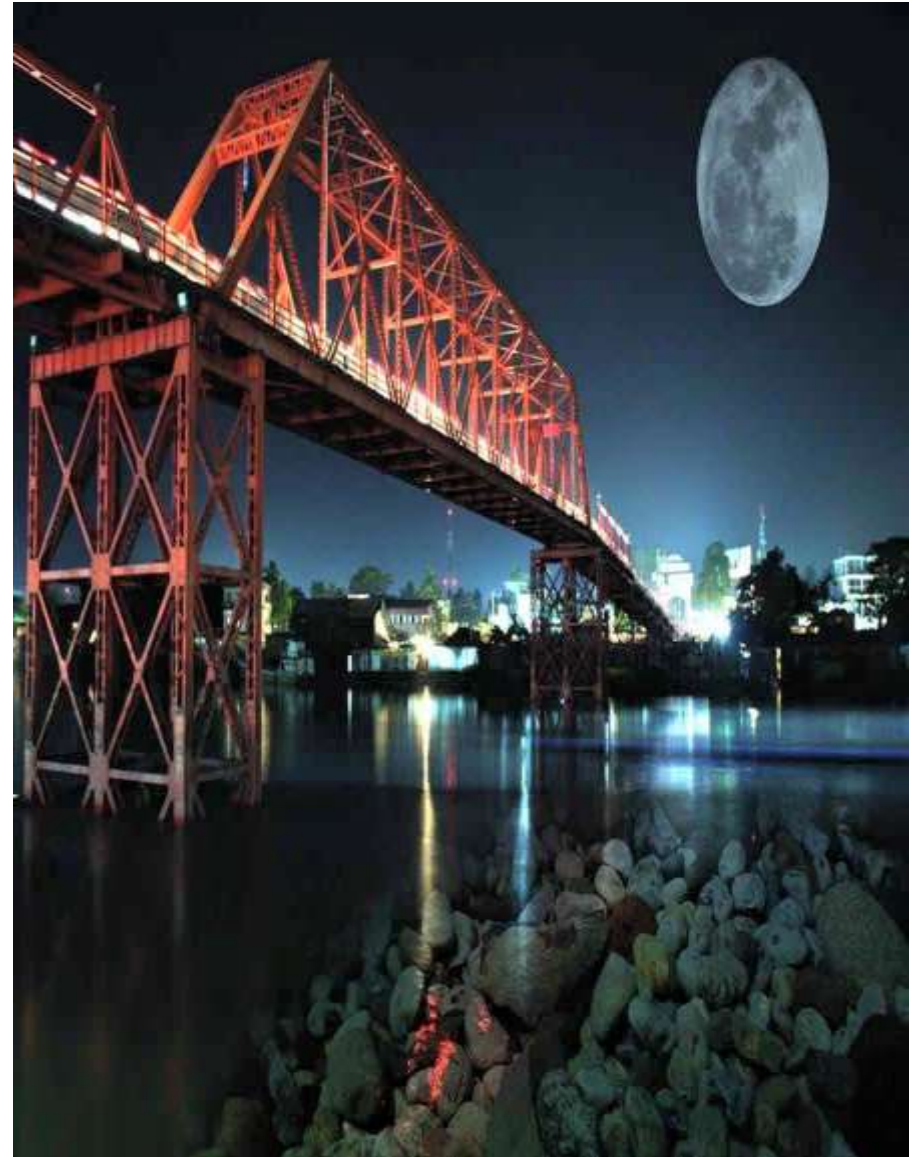
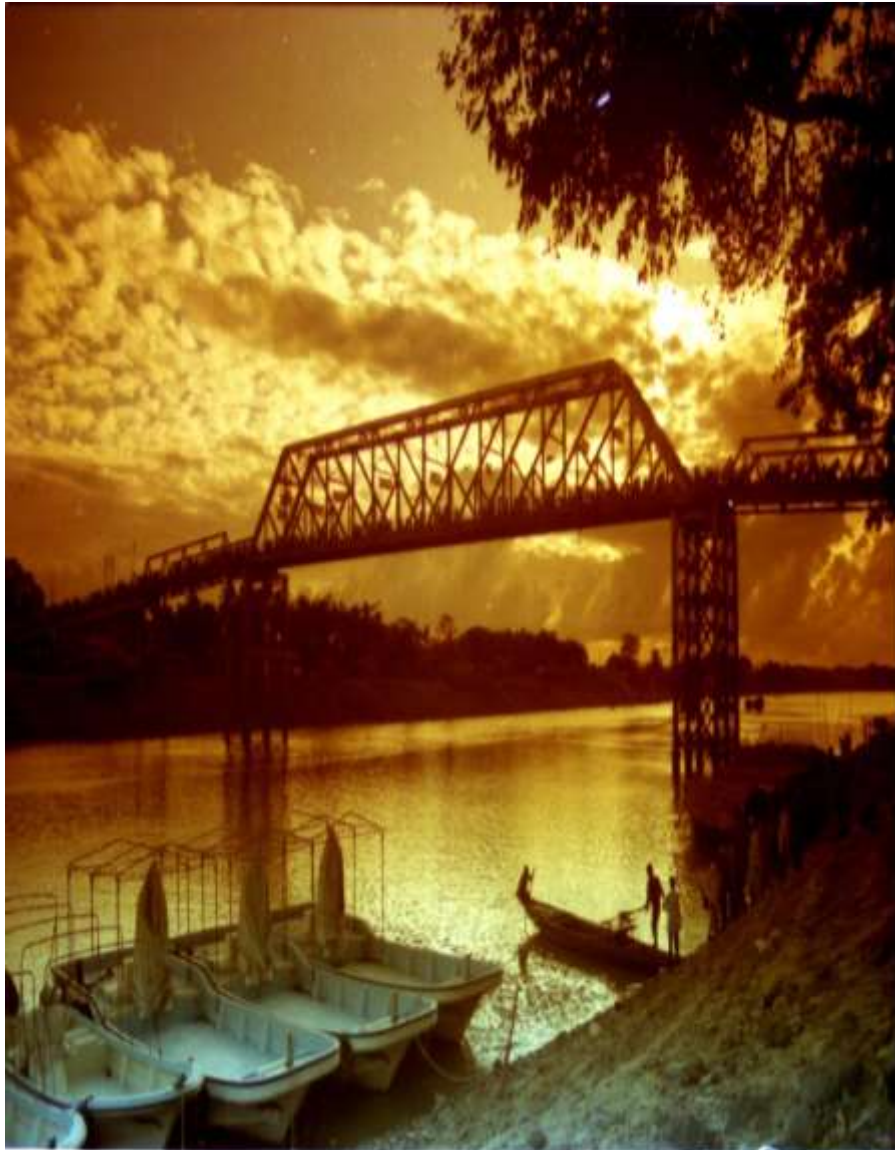




# *Hazrat Shah Poran (R:) Mazar*



# *Keane Bridge of Sylhet.*





*Ali Amjad's Clock of Sylhet.*

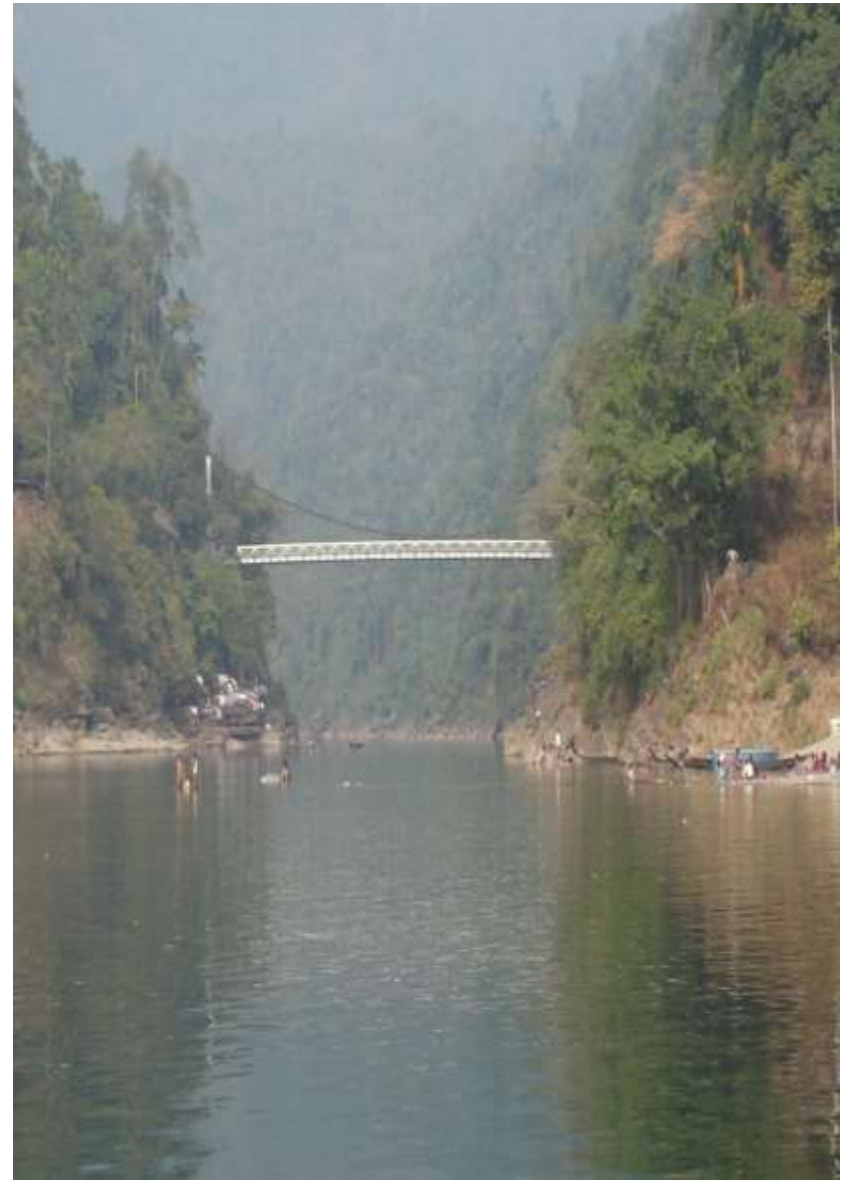


Malnichhora (1854) is the first tea garden in this Sub-continent.





# Jaflong A Place of Natural Beauty





## Rowing on Surma River



# Cultural Life of Monipuri Tribes.





***Sylhet Shahi Eidgha It Constructed During Mugal Era.***



সিলেটের ঐতিহাসিক শাহী ঈদগাহর প্রবেশদ্বার-



## ***Vision:***

***To establish a safe, clean, healthy and productive city.***

## ***Mission:***

- **Deliver effective and efficient service to the city dwellers.**
- **Ensure well designed residential and commercial spaces for city dwellers.**
- **Establish smooth and safe transport system.**
- **Well designed drainage system to eliminate water logging from the city.**
- **Provide pure drinking water and water supply for the city dwellers.**
- **Create a solid and clinical waste management system.**

**City: Sylhet City Corporation (SCC),  
Bangladesh.**

**General information about the city:-**

- **Sylhet City Corporation,**
- **Sylhet, Bangladesh.**
- **Area 27.36 sq km,**
- **located in between 24°51' and 24°55' north latitudes and in between 91°50' and 91°54' east longitudes.**



# Basic Information of Sylhet City Corporation

<b>Established</b>	<b>: 2002 AD (earlier it was municipality estd. in 1887 AD)</b>
<b>Area</b>	<b>: 26.50 Sq Km</b>
<b>Population</b>	<b>: About 1.00 Million</b>
<b>Ward</b>	<b>: 27</b>
<b>Councilor</b>	<b>: 36</b>
<b>Bituminous Road</b>	<b>: 314 Km</b>
<b>C.C/R.C.C Road</b>	<b>: 269 Km</b>
<b>Earthen Road</b>	<b>: 54.25 Km</b>
<b>Drain : 450.00 Km (Solid)</b>	<b>: 520.00 Km (Not Solid)</b>
<b>Street Light</b>	<b>: 14,561 Nos</b>
<b>Solid Waste generate</b>	<b>: 200-220 MT/daily</b>
<b>Solid Waste Disposal</b>	<b>: 180-200 MT/daily</b>
<b>Dumping Ground</b>	<b>: 1 (area: 5.00 hector)</b>
<b>Waste Disposal Truck:</b>	<b>45</b>
<b>Tractors/Trolley</b>	<b>: 3</b>
<b>Hand Trolley /Van</b>	<b>: 135</b>
<b>Long Boom</b>	<b>: 1</b>
<b>Short boom</b>	<b>: 1</b>
<b>Pay-Loader</b>	<b>: 1</b>

# Main Activities of Sylhet City Corporation

- **Collection and Removal of Solid Waste**
- **Collection of Holding Tax**
- **Water Supply to City Dwellers**
- **Construction of Roads, Footpath, Drainage System**
- **Construction Bus/Truck Terminal**
- **Development of Park/Market**
- **Runs Primary Health Care Centers**
- **Approve the Drawing of Building Constructions**
- **Improve Slums/Colony of Low Income People**
- **Maintain & Install Street Lights in City**
- **Making New Development Plans/Projects**



# **DRAINAGE SYSTEM.**

# THE MAIN FEATURES OF DRAINAGE SYSTEM

## Disadvantages:

- Long Monsoon (April-October)
- Rain prone area
- Sloped topography
- Erosion of hilly area

## Advantage:

- The river Surma is the final out fall of all drainage system.
- 26 canals flowing through city area and falls to the river Surma
- Rapid discharge of rain water due to sloped topography.



# **DRAINAGE SYSTEM OF SCC:**

**All though rainy season starts from June and lasts upto September in Bangladesh but in Sylhet it starts from the April and longed upto October. So drainage problem is severe in Sylhet City Corporation. To solve the problem city corporation took several initiatives.**

# Challenges:

- Silt up of Surma river i.e bed level raised up.
- Unauthorized encroachment of natural canals.
- Direct dumping of solid waste.
- Bottom neck shape of canals at some places.
- Utility service pipes passes through middle section of drains causes block.
- Smalls section of drains.
- Irregular cleaning.



# Mitigation of Challenges

- **Dredging of River Surma.**
- **Construction of Pump Station**
- **Administrative action against illegal occupier of natural canal.**
- **Construction of Retaining wall at bottle neck portion to increase cross section of canal.**
- **Utility service pipes should placed at the bottom or top level of the drain.**
- **Construction of new drain.**
- **Regular cleaning.**
- **Creating public awareness.**
- **Creating sprite of ownership among citizens.**

# Action of SCC to mitigate drainage congestion

- River bank protection.
- Construction of retaining wall besides canals to conserve the canals from illegal occupier.
- Construction of RCC U drain & cover drain to drain out rain water quickly.

# Solid Waste Management



# **Solid Waste Management**

- Collection at source (houses, shops, hospitals, restaurants, market etc.) in bags, polytheen, containers.**
- Collected by van poolers/ thrown to canal/ open dumping place (beside the road)/ open drains.**
- Carried to primary dumping places/ STS.**
- Carried to the Dumping Ground (Final Disposal)**

**About 220 m tons of solid waste are produced everyday from domestic, commercial & Clinical source.**

**Everyday City Corporation collects about 180-200 tons of waste and dump in Open dumping site at Lalmatia which is fully marshy & low-laying land. It is about 5 Km from city center. The land is about 1-15 Ft below the existing road level.**

**The present method of open dumping system is environmentally & hygienically unacceptable. The following method may be used for solid waste disposal :-**

**(1)Control dumping method (2) Sanitary landfill  
(3) Incinerator (4) composting (5) Resource recovery from the waste.**

**But it is very difficult to establish a sanitary landfill. A project named MGSP Financed By World Bank is working for the development of dumping ground.**



**Few Photograph  
Solid Waste Collection  
& Management**

## MAN MADE ENVIRONMENTAL HAZARDS



***Careless garbage dumping creates water pollution at Baghbari***

***Haphazard Waste Dumping at Lamabazar***





## MAN MADE ENVIRONMENTAL HAZARDS



*Improper use of dustbin at Sheikhghat*

*Untreated Waste Disposal at Laladigirpar*





*Careless garbage dumping at Shahi-Eidgha Area.*



*Careless garbage dumping at Kajitula Area.*





***Careless garbage dumping at Shibgonj Forhad kha Bridge Area.***





***Careless garbage dumping at Mirabazar Area.***



*Careless garbage dumping at Upo-Shahar Area.*





# Modern Dustbin at City Corporation Area.





## Modern Dustbin at City Corporation Area.





# Modern Dustbin at City Corporation Area.



# Secondary Transfer Station (STS) UPO-SHAHOR.







**SHAHI EIDGHA-STS(secondary transfer station)**





**TILA GOR – STS(secondary transfer station)**



## Secondary Transfer Station (STS) *RECABIBAZAR.*



# Garbage Loading System in Secondary Transfer Station





# Garbage Loading System in Secondary Transfer Station





# Garbage Loading System in Secondary Transfer Station



# Garbage Loading System in Secondary Transfer Station





# *Solid Waste Disposal Dumping Ground*





## ***Solid Waste Disposal Dumping Ground***





## ***Solid Waste Disposal Dumping Ground***



# *Solid Waste Disposal Dumping Ground*





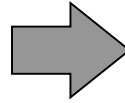
**Few Photograph**

**DRAINAGE**

**SYSTEM.**



**Before Construction**



DRAIN & ROAD AT NOYA BAZAR.



**After Construction**



## Construction of R.C.C. Drain at Vatalia Main Road.





## Construction of R.C.C. Drain at Mojumdary & Chowkidiki .



## Construction of R.C.C. Drain at Kodomtoly – Shib Bari.





## Construction of R.C.C. Drain at Holdichara .





## Construction of R.C.C. Drain at Babu Chara.



## Drainage Solid –Waste Collection System in Sylhet City Area.





## Drainage Solid –Waste Collection System in Sylhet City Area.





## Drainage Solid –Waste Collection System in Sylhet City Area.



## Drainage Solid –Waste Collection System in Sylhet City Area.





## Drainage Solid –Waste Collection System in Sylhet City Area.





## Drainage Solid –Waste Collection System in Sylhet City Area.





## Drainage Solid –Waste Collection System in Sylhet City Area.





## Drainage Solid –Waste Collection System in Sylhet City Area.





**Thanks a Lot**