



Presentation on Afforestation Project in Bangladesh

A K Enamul Haque

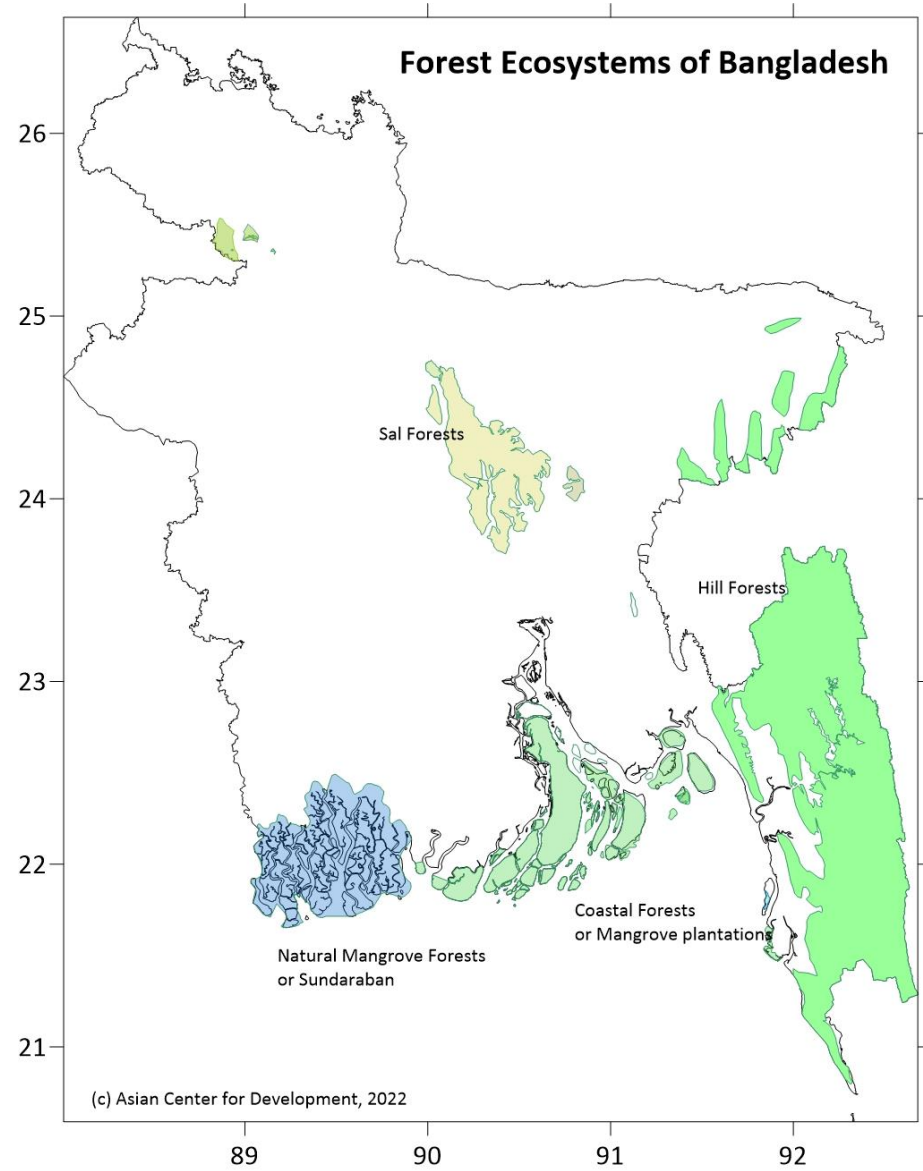
Raquibul Amin

Saiyeeda Saniya Munim

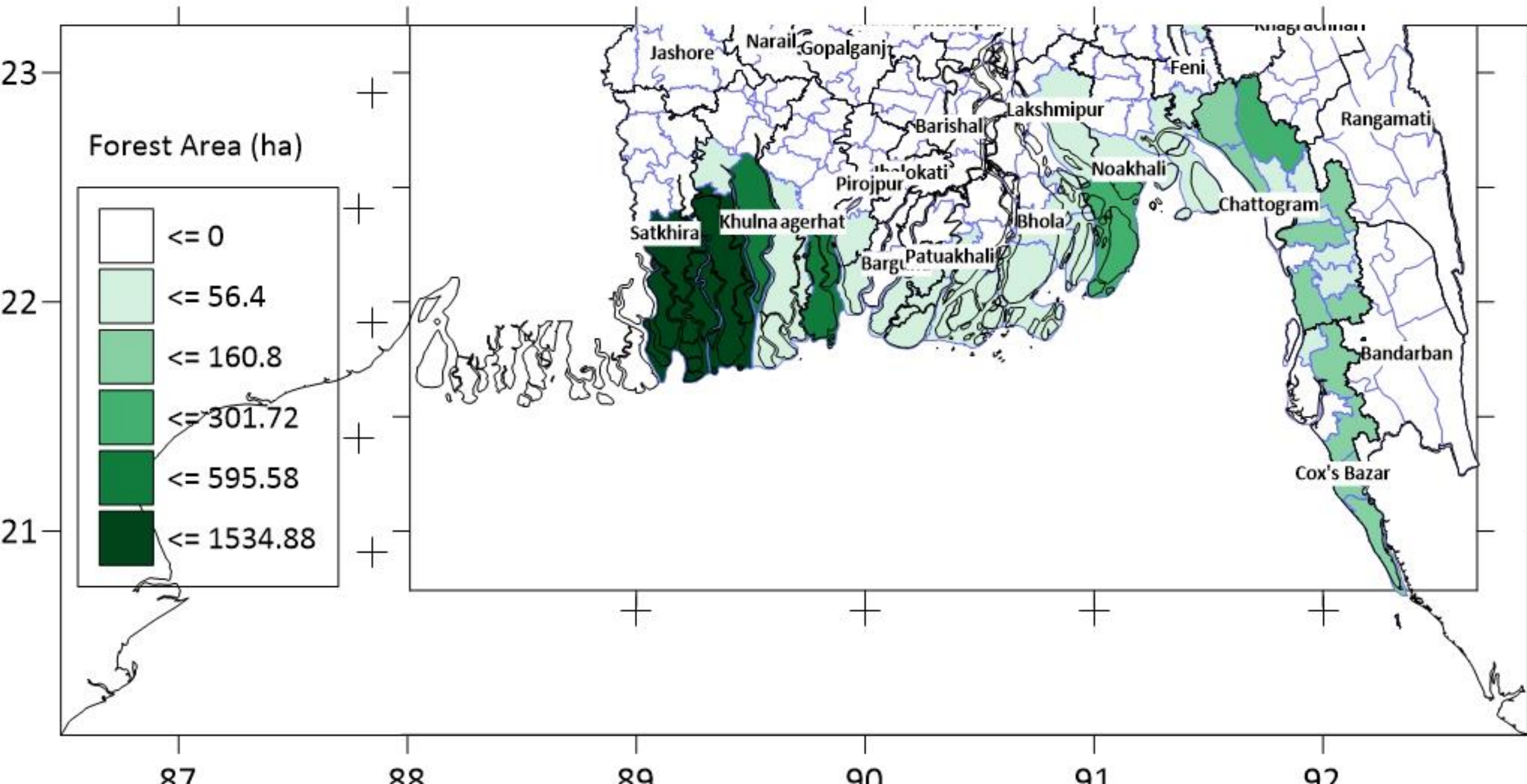
Estiaque Bari

Objectives

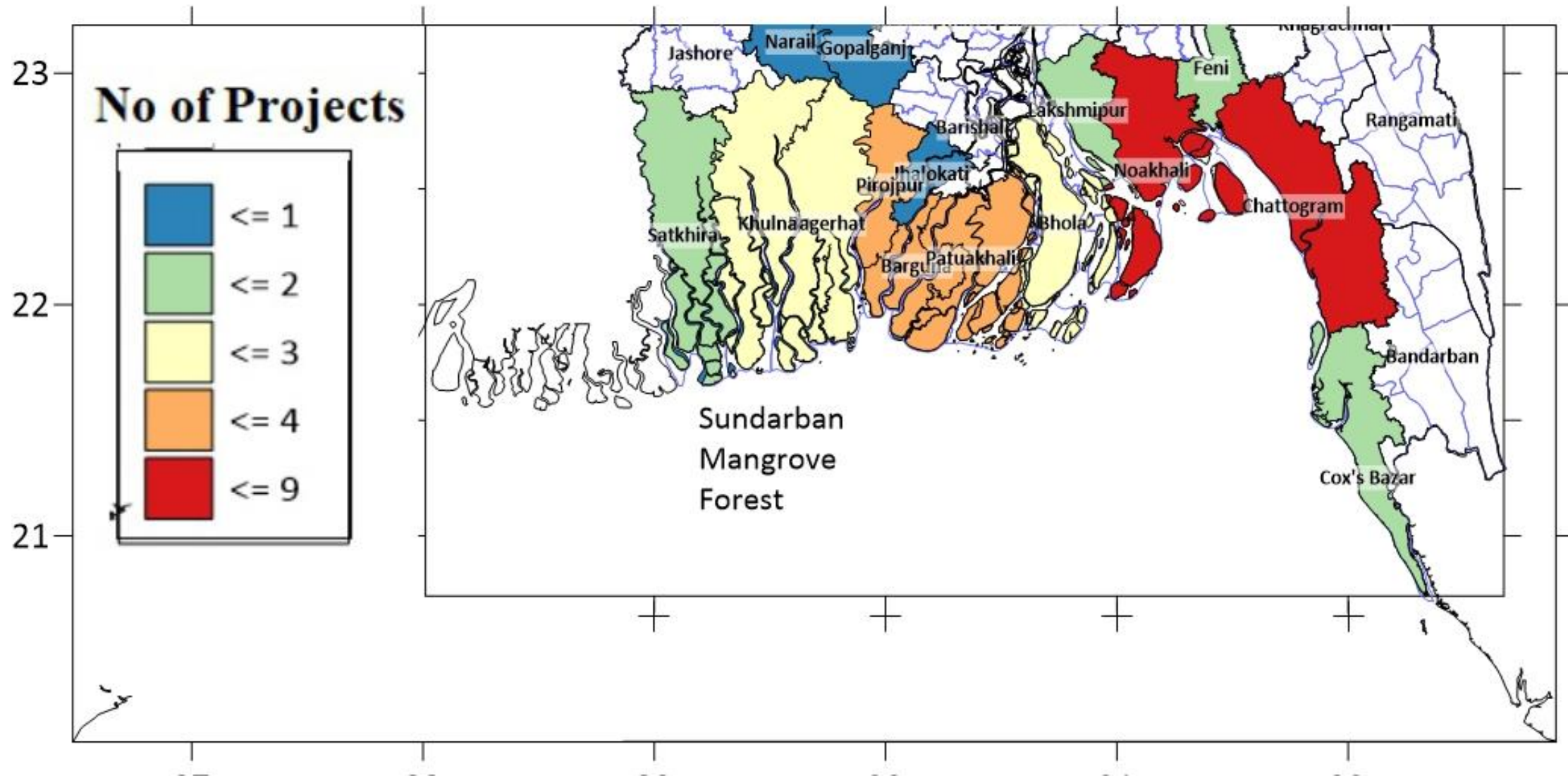
- **Elucidate the economics of forest restoration (both plantations and natural regeneration) as a nature-based carbon mitigation option in Bangladesh.**
- **Examine if forest restoration can generate job opportunities for women, youths, and marginalized communities and support rural livelihoods of smallholder farmers as a pathway out of poverty.**
- **Identify and compare different interventions for promoting forest restoration, such as payment-based mechanisms versus alternative mechanisms (e.g., tenure reform, out grower schemes, and technical support), to attain sustainable and green recovery and equitable resource use systems.**
- **Propose appropriate institutional arrangements for scaling up forest restoration.**
- **Build the capacity of younger and emerging researchers to conduct policy-relevant research on the topic.**



Forest Area in Coastal Districts of Bangladesh



Number of Projects since 1980s

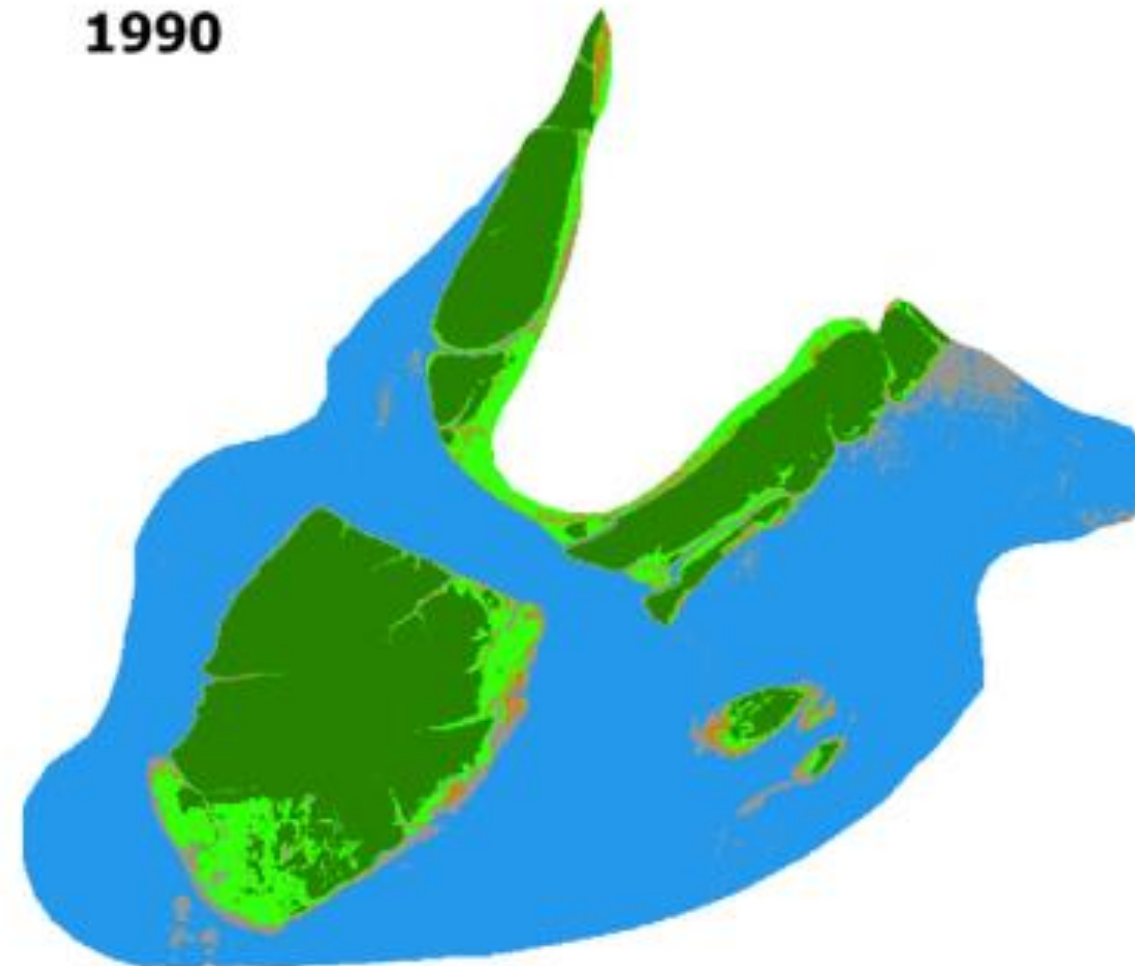




Projects

Projects	1980																			2000												
Projects	80	81	82	83	84	85	86	87	88	89	90	91	92	93	94	95	96	97	98	99	0	1	2	3	4	5						
MAP I	mangrove																															
MAP II						mangrove					C																					
FRMP													mangrove replacement																			
CGP																social forestry																
CDSP II																					Agricultural prod											

Mangrove Afforestation Project 1980-1992



Legend

- F
- NFV
- BL
- S
- WB



Contents lists available at ScienceDirect

Environmental Challenges

Journal homepage: www.elsevier.com/locate/envc

A three decade assessment of forest cover changes in Nijhum dwip national park using remote sensing and GIS

Md. Rafikul Islam^{a,b,c,*}, Md. Nabiul Islam Khan^b, Md. Zulfikar Khan^b, Bishwajit Roy^c

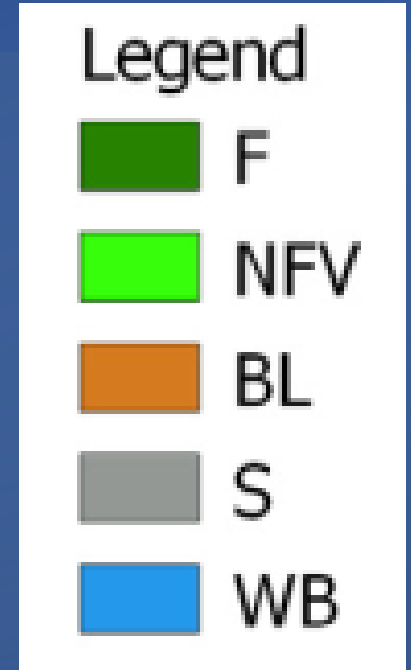
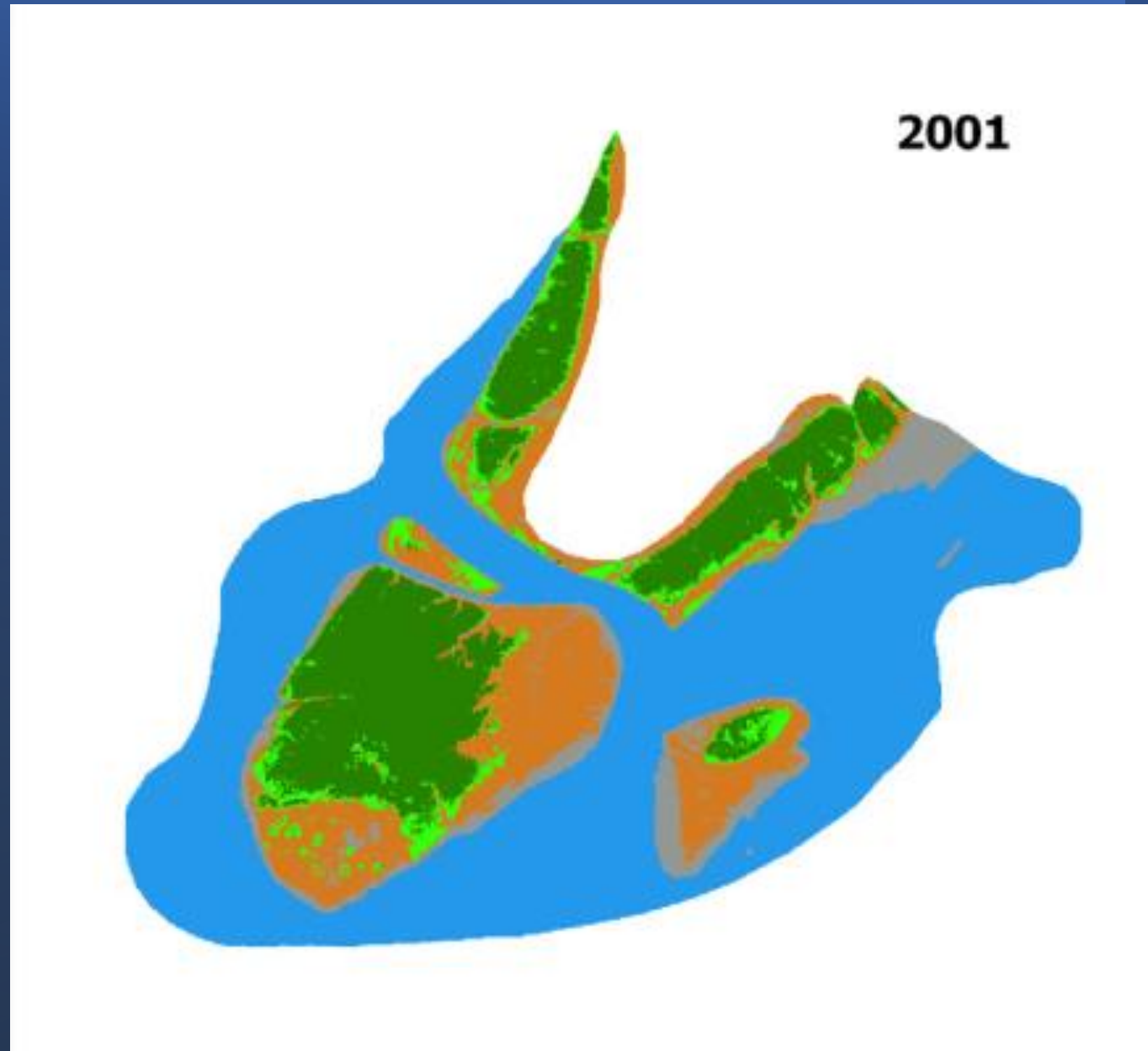
^aForestry and Wood Technology Discipline, Khulna University, Khulna 9208, Bangladesh

^bGraduate Member Master degree in Mediterranean Forestry and Natural Resource Management, School of Agriculture, University of Lisbon, Lisbon 1349-017, Portugal

^cCentre for Ecology, Evolution and Environmental Changes, Climate change research group, Faculty of Science, University of Lisbon (FCUL), Portugal

Coastal Greenbelt Project 1995-2002

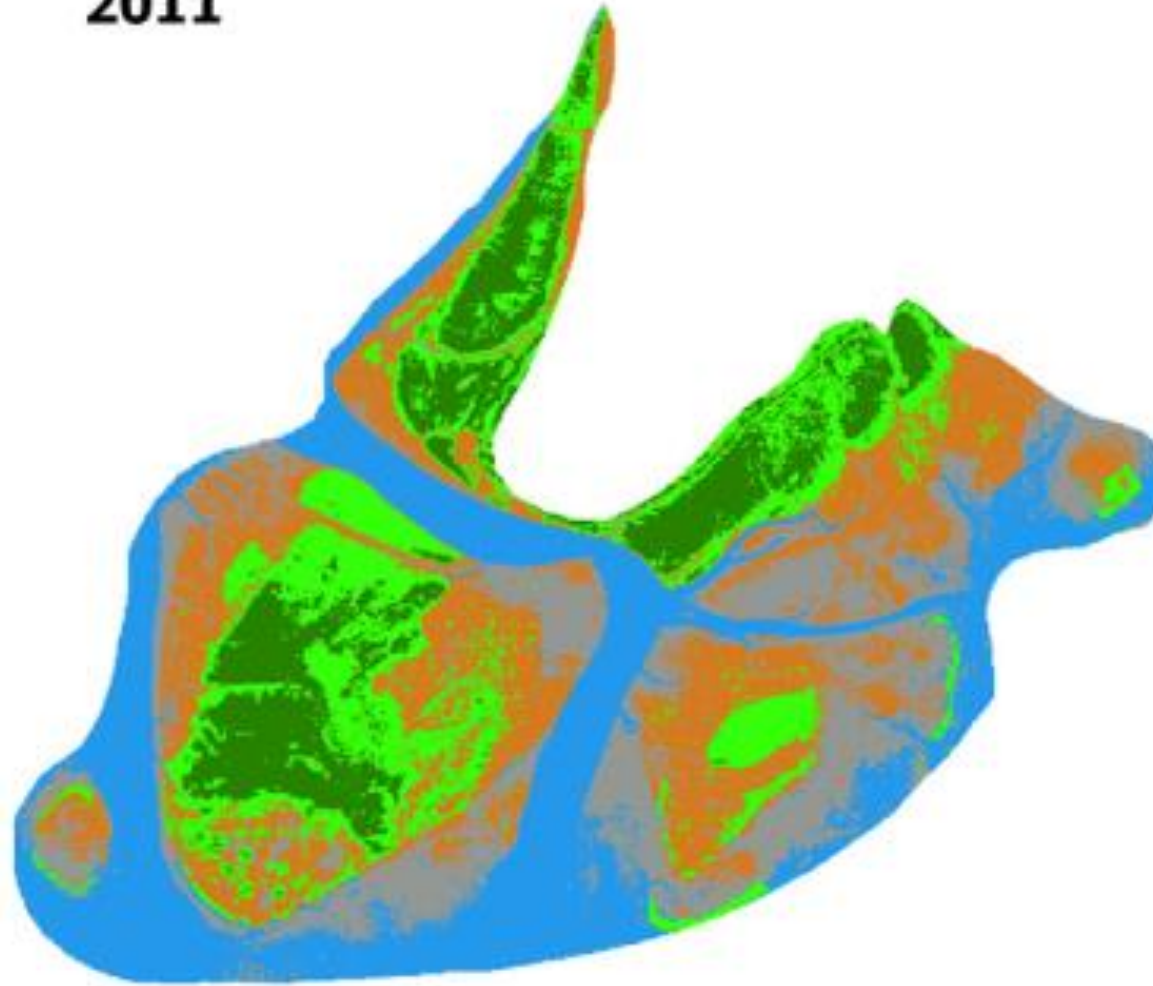
Social Forestry



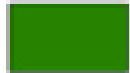




Char Development and Settlement Project

2000-2005

2011



Legend

-  F
-  NFV
-  BL
-  S
-  WB



Contents lists available at ScienceDirect

Environmental Challenges

journal homepage: www.elsevier.com/locate/envc

A three decade assessment of forest cover changes in Nijhum dwip national park using remote sensing and GIS

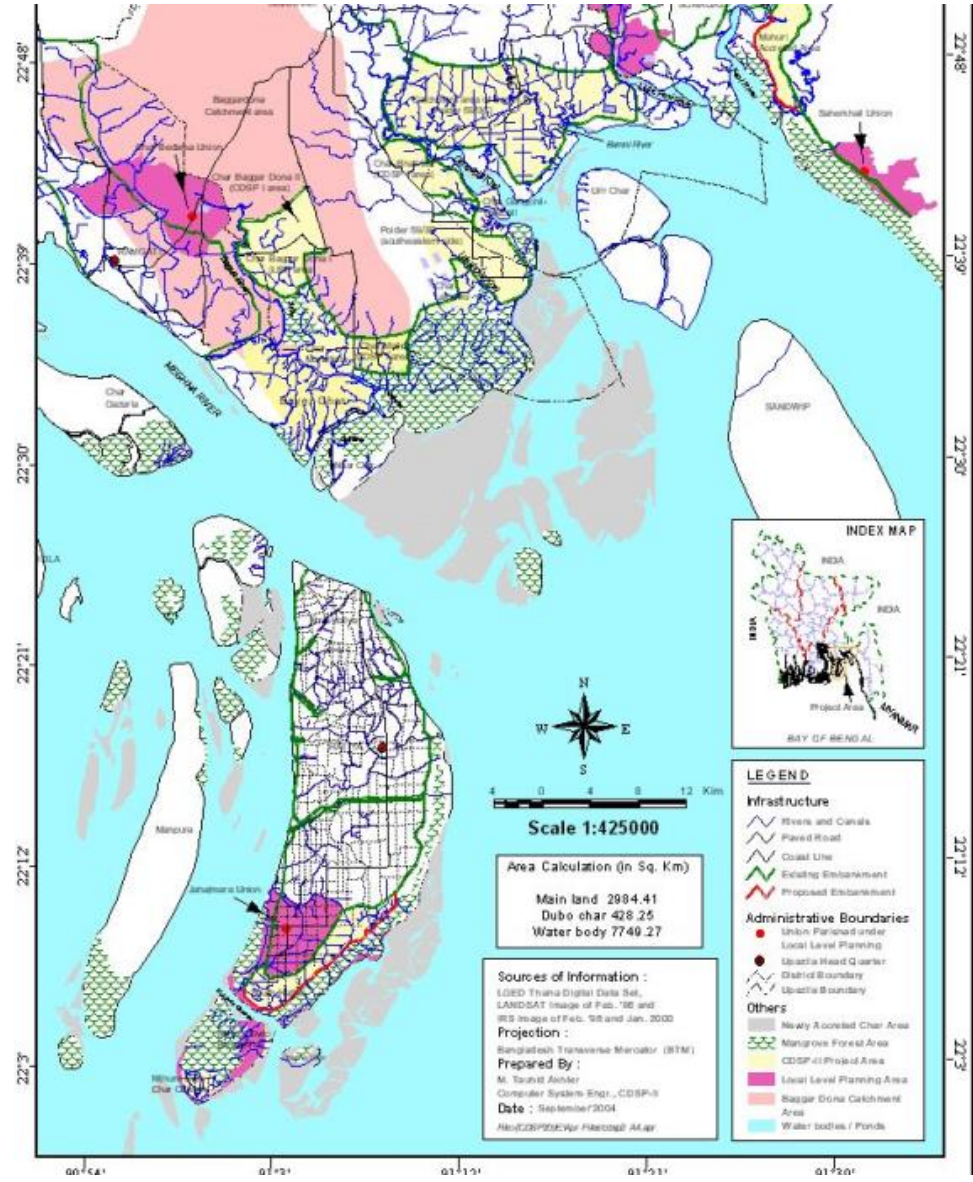
Md. Rafikul Islam^{a,b,c,*}, Md. Nabiul Islam Khan^a, Md. Zulfikar Khan^b, Bishwajit Roy^c

^aForestry and Wood Technology Discipline, Khulna University, Khulna 9208, Bangladesh

^bEuropean Master degree in Mediterranean Forestry and Natural Resources Management, School of Agriculture, University of Lisbon, Lisbon 1349-017, Portugal

^cCentre for Ecology, Evolution and Environmental Changes, Climate change research group, Faculty of Science, University of Lisbon (FCUL), Portugal

Char Development and Settlement Project II



Government of Bangladesh World Food Programme Government of the Netherlands

CHAR DEVELOPMENT & SETTLEMENT PROJECT II
 CDSP-II

চর উন্নয়ন ও বসতি স্থাপন প্রকল্প ২

BANGLADESH

Total Project Costs and forest and agriculture areas In Nijhum Dwip and adjacent Unions

Projects	Budget	M. area			Non-Mangrove area			
MAP I	17.2 mUSD	43807 ha			13 ha	Agri land		
MAP II	36 mUSD	32914 ha			1192 ha			
FRMP	36.4 mUSD	24000 ha			9000 ha			
CGP	14.673 mUSD	10820 ha			5247 ha			
CDSP II	14.03 mUSD						1110 ha	

Table 3

Category wise land use distribution of NDNP from 1990 to 2020.

Category	Land cover in 1990		Land cover in 2001		Land cover in 2011		Land cover in 2020	
	Area (ha)	(%)	Area (ha)	(%)	Area (ha)	(%)	Area (ha)	(%)
Forest	4217.49	25.81	2982.51	18.26	2126.16	13.01	2436.48	14.91
Non-Forest-Vegetation	1296.90	7.94	802.44	4.91	2992.14	18.31	3212.37	19.66
Barren Land	249.66	1.53	2555.37	15.64	3692.97	22.60	5738.67	35.13
Sand	723.78	4.43	1209.24	7.40	3266.46	19.99	358.29	2.19
Water Body	9849.60	60.29	8787.87	53.79	4259.70	26.07	4591.62	28.10
Total	16,337.43	100	16,337.43	100	16,337.43	100	16,337.43	100

Contents lists available at [ScienceDirect](https://www.sciencedirect.com)

Environmental Challenges

journal homepage: www.elsevier.com/locate/envc

A three decade assessment of forest cover changes in Nijhum dwip national park using remote sensing and GIS

Md. Rafikul Islam^{a,b,*}, Md. Nabiul Islam Khan^a, Md. Zulfikar Khan^b, Bishwajit Roy^c

^a Forestry and Wood Technology Discipline, Khulna University, Khulna 9208, Bangladesh

^b Erasmus Mundus Master degree in Mediterranean Forestry and Natural Resources Management, School of Agriculture, University of Lisbon, Lisbon 1349-017, Portugal

^c Centre for Ecology, Evolution and Environmental Changes, Climate change research group, Faculty of Science, University of Lisbon (FCUL), Portugal



Institutions

- **Forest Department**
 - **Water Development Board**
 - **NGOs**
 - **Department of Environment**
- 

What needs to be finalized?

- **Site**
- **Defining the intervention**
- **Impacts**
- **Distribution of impacts**